



The purpose of ASHRAE 188-2015 is to establish minimum *Legionellosis* risk management requirements for building water systems. Premier Water & Energy Technology, Inc. can help facilitate 188 compliance by supporting the key components of the standard. The adoption and implementation of a Water Management Plan is highly recommended.

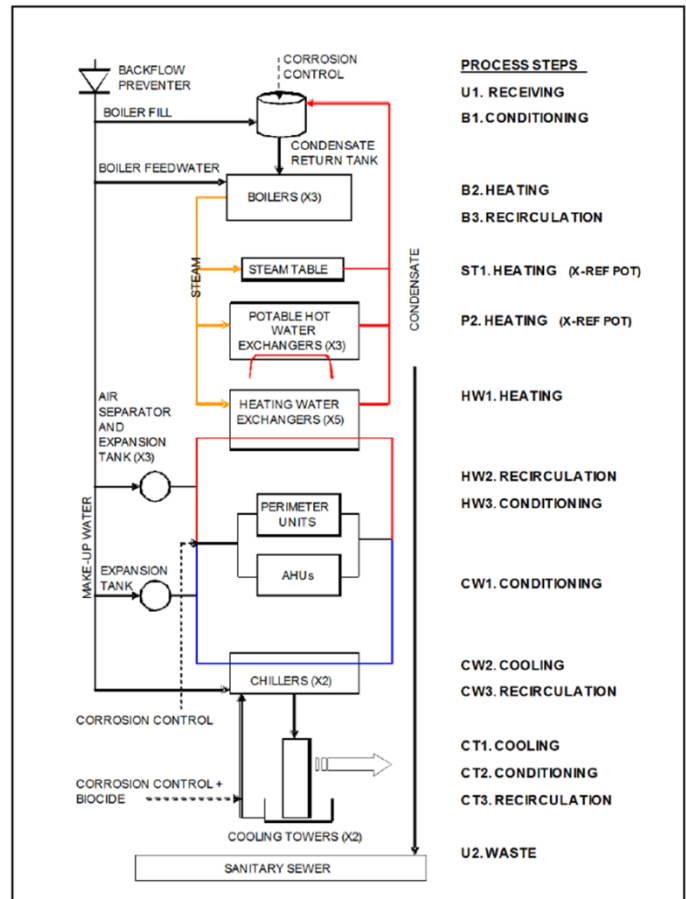
Development of a Water Management Plan (WMP)

- Program development begins with a meeting of key stakeholders at your facility to establish who will be on the Water Management Plan Team. The Program Team is a group of individuals designated by the building owner or designee to be responsible for developing, implementing, and maintaining the Program. Typically, this team will include building owners, water treatment companies, engineering firms, industrial hygiene/environmental consultants, plumbing, HVAC, or other contractors, laboratory representatives, Legionella specialists, equipment manufacturers, and in-house personnel.
- Survey the Site. As part of your team, Premier can help identify and describe the potable, non-potable, and utility water systems within the building and on the building site. This information must be graphically described in a step-by-step process flow diagram.
- Create a Water Management Plan (WMP). A third-party Legionella specialist will develop the WMP based on the survey and the process flow diagrams. This WMP becomes a risk management tool designed to prevent and control *legionellosis* associated with building water systems. The plan will include implementation, operation and documentation criteria.

Implementation of Control Measures

The WMP will identify key control measures based on the results of the analysis of the building water systems. Premier will be involved in coordinating items including:

- Treatment methods
- Technical and physical processes
- Procedures and activities or actions that monitor or maintain the physical or chemical conditions of water to within established control limits



U = utility B = boiler ST = steam table P = primary potable HW = hot water CW = chilled water (evaporator) CT = cooling tower (condensate) X-REF POT = cross-reference potable water system



Water Sampling

- As outlined by the WMP, a monitoring program will be put in place. This program will include the means, methods, and frequency of sampling and reporting.
- Examples of monitoring that Premier can perform include oxidant evaluations, bacterial dip slides, and ATP testing.

Laboratory Testing

- Legionella testing is not a requirement of ASHRAE 188-2015. However, if it is included as part of the Water Management Plan, Premier will coordinate collection, transportation, chain of command, and reporting from a third-party microbiological lab that specializes in Legionella testing.

Remediation

- In the event that remediation is necessary, Premier along with Legionella specialists and equipment manufacturers will recommend and implement, as required, remediation protocols. Protocols will be based on appropriate industry standards for the system(s) affected and may include, but not limited to procedures identified by:
 - Centers for Disease Control and Prevention (CDC)
 - Cooling Tower Institute (CTI)
 - Association of Water Technologies (AWT)
 - Occupational Safety and Health Administration (OSHA)
 - Joint Commission on Accreditation of Healthcare Organizations (JCAHO)
- With the approval and help of the building owners and equipment manufacturers, Premier will provide and implement solutions for remediation.

Primary reference document:

ASHRAE 2015. ANSI/ASHRAE Standard 188-2015, *Legionellosis: Risk Management for Building Water Systems*: ASHRAE